

Site Office: Plot No.-6, Knowledge Part-V, Greater Noida(West)  
<http://www.galactic-city.in/>  
RERA Reg. No. UPRERAPRJ436071

ENDLESS LUXURY

DISCLAIMER

THE PICTURES AND DETAILS ARE TENTATIVE DEPICTIONS ONLY. THIS IS NOT A LEGAL OFFER. MENTIONED FEATURES ARE INDICATIVE AND ARE SUBJECT TO CHANGE WITHOUT ANY PRIOR NOTICE AS MAY BE DECIDED BY THE COMPANY OR COMPETENT AUTHORITY.  
\*TERMS AND CONDITIONS APPLY. SPECIAL SCHEME BY THE DEVELOPER. 1 SQ.MTR=10.764 SQ.FT & 1 SQ. YD=0.83 SQ.MTR





GALACTIC CITY

AN  
AFFLUENT  
CITY

## About SARVOTTAM GROUP

### **The Beginning of a Saga**

The Legacy was founded by Three Generations of Entrepreneurs who joined forces to create a vibrant company with the primary objective of upholding the highest standards of quality, which has helped them rapidly gain a commendable reputation. Since then, the Sarvottam Group has carved a significant niche for itself in the Real Estate Industry. The Group's main Motivation lies in Maintaining High Standards of Artistic Splendor and Luxurious Comfort making them the most preferred choice for all their customers. The Sarvottam Group, upholds the greatest standards of excellence allowing it to quickly develop an enviable image along with its Residential and Commercial Projects for creating a bigger benchmark in future.

### **Introducing the Realty Magic**

Being an established and acclaimed Real Estate Developer in the Delhi & NCR area, SARVOTTAM GROUP builds with ethics and constructs with conscience. The Group is led by the Young and Dynamic Visionaries, who push forward the Betterment of SARVOTTAM GROUP in each & every moment.

### **Sarvottam Group – The Spirit of Creativity, Intelligent Planning and Perfection**

Sarvottam Group represents the pinnacle of luxury, integrating top-notch craftsmanship and understated magnificence. The organization's pursuit of excellence, a trait it has honed over the years serving the country, reflects its spirit of creativity and perfection.



# MASTER SITE PLAN



# PRODUCT RANGE OF GROUP

## GALACTIC CITY

**GALACTIC CITY,  
CYBER HUB**  
*4 Floor Independent  
Office Building Spaces*



**GALACTIC CITY,  
UNIVERSAL TOWER-1**  
*Wifi Enabled Township*



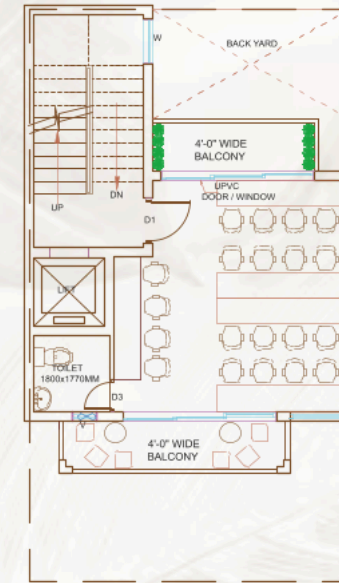
**TERMINAL-21**  
*High Street Retail Shops*



**RESIDENTIAL**  
*Ultra Luxury Apartments*







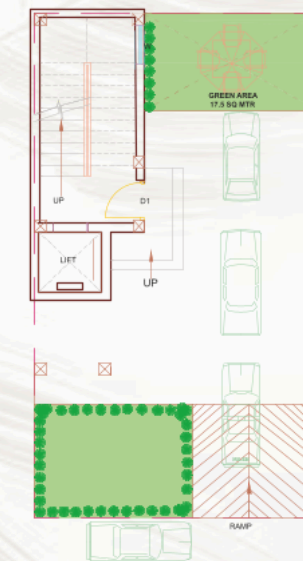
### FLOOR PLAN

#### TYPICAL UNIT 1<sup>st</sup> to 4<sup>th</sup> Floor

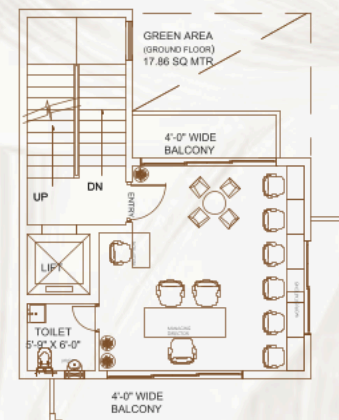
**Covered Area**  
49.70 sq. mtr. (535 sq.ft.)

**Builtup Area**  
68.36 sq. mtr. (735.55 sq.ft.)

**Super Area**  
82.22 sq. mtr. (885 sq.ft.)



### STILT FLOOR PLAN



### FLOOR PLAN

#### CORNER UNIT 1<sup>st</sup> to 4<sup>th</sup> Floor

**Covered Area**  
56.02 sq. mtr. (603 sq.ft.)

**Builtup Area**  
73 sq. mtr. (785.76 sq.ft.)

**Super Area**  
92.43 sq. mtr. (995 sq.ft.)

# About GALACTIC CITY

## CYBER HUB

*Galactic City, Cyber Hub- Innovative in Design, High Standard in Amenities and Unparalleled Size in Flexibility*

A new advancement for Corporate India that offers more than just an office space to work from. GALACTIC CITY, CYBERHUB creates integrated professional lifestyle patterns. Ideally situated, cleverly constructed and first-rate in terms of amenities and aesthetics accommodating adaptable workplace sizes. GALACTIC CITY, CYBERHUB makes Elegant and Opulent Business Choices Accessible, offering unmatched craftsmanship and exceptional amenities accompanied by a Guest Room with a Lounge Area. A luxurious Stilt+4 Storey Independent Office Structure that's spread across 120 square yards that exudes stature, promotes talent attraction and retention and offers a productive environment for continuous development. The Terrace availability in the Building gives ample opportunities to celebrate leisurely activities. GALACTIC CITY, CYBERHUB is a ladder that seeks to improve work experiences in every possible aspect.

Galactic City provides expanding businesses with the ideal commercial setting. With world-class private offices and a distinctive design that gives you the freedom to extend your office space as your company develops, making intelligent planning becomes more and more commercially optimal. Get the best of both worlds in a perfectly proportioned, top-notch workplace in the business hub, Noida with of Lush Green Space and 100% Electricity Backup. So, why give up the chance and space for a righteous commercial address and settle for an inadequate awkward commercial location when you have a Commercial Extravagance that connects effectively with Customers, Coworkers and Potential Investors.



# UNIVERSAL TOWER - 1 AND 2

*Wifi Enabled Township*

The first futuristic city Galactic City in the heart of Greater Noida (west) it offers finest infrastructure amalgamated with world class amenities to elevate your lifestyle. Project has been launched after an extensive market research and with the aim of fulfilling the gap between the clients' expectations. Your search for premium commerical shops & office spaces in Greater Noida west ends at Universal Hub of Galactic City.

Bang on 130 mtr road with two side open 20 acre plots, upcoming metro station opposite to our site, well connected to Yamuna Expressway and Eastern Peripheral Expressway, major corporate nearby like Honda, LG, NIIT etc, well connected to national highway 24,91,58 where you will set out conquer the world. Universal Hub, as the name implies, is not just the emphasis on design that make use of latest technologies, offer a space that enhances productivity, keeping your energy level high, work pressure will be something that will turn into a thing of past.



L TOWER GROUND FLOOR PLAN



TYPICAL FLOOR PLAN  
UNIVERSAL TOWER-1 (T 12)



TYPICAL FLOOR PLAN  
UNIVERSAL TOWER-2 (T 3)





## TERMINAL-21

*THE DESIRED DESTINATION FOR URBAN LUXURY*

A Panoramic Collection of Commercial Properties Overlooked by **more than 1000 Office Spaces** that are occupied by a diverse mix of **High Street Retail Shops** and other Consumer-facing Businesses **spread over entire 2 Floors.**

What sets **Sarvottam Terminal-21** apart from other **Commercial Retail Estates** is its Prime Location and Accessibility. It is a popular location for both Existing and Emerging Retailers because of the Seamless Networking Hub created by the **Adjacent Workplaces, Public Transportation, Residential Neighbourhoods** and the exposure that comes with being located in a **Prominent Location.** This Expansive Commercial Setting can help you Bag the benefits of a Professionally Competent lifestyle in a Busy Metropolitan Setting.



GROUND FLOOR PLAN

FLOOR PLAN

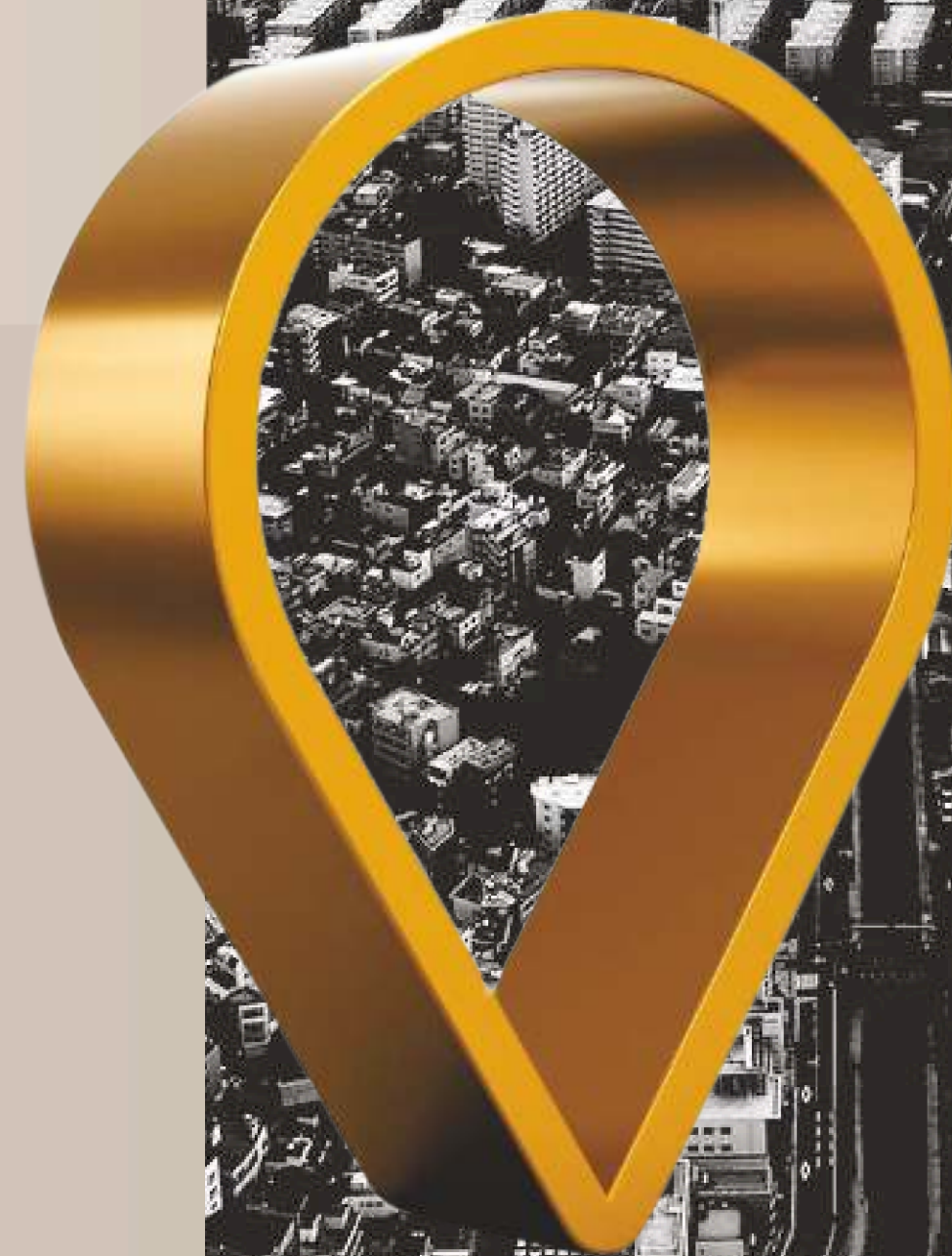


## PREMIUM VICINITY

*Enter a World of Limitless Possibilities*

A Business with Flourishing Foresight will recognize the enormous benefits of having a Workplace & Homespace in Galactic City, Knowledge Park V, Greater Noida(W).

- 📍 Located Adjacent to Microsoft IDC Campus
- 📍 Direct Connectivity on 130 metre Road
- 📍 Near Upcoming Metro Station KP-V
- 📍 Close vicinity to Jewar Airport
- 📍 Immense Upcoming SHRI JAGANNATH TEMPLE.
- 📍 Adjacent to Residential Sector-10 & 12
- 📍 Nearby Major corporates like Honda, LG, Moser Baer, NIIT, HCL, American Express, Samsung & Wipro
- 📍 Adjacent to YOTTA Data Centre
- 📍 Well connected to Taj Expressway, Delhi-Mumbai Corridor, Eastern Peripheral, NH-9 & FNG Expressway
- 📍 Project surrounded by Institutions like NIILM-CMS, The Millennium School



## FACETS OF NATURE:

*A Framework for a Blissful Lifestyle*

The Sarvottam Group puts forward a Plethora of Dynamic Facets and Innovative Features that combine modern technology with luxurious comfort on the premises to give residents access to integrated living patterns that offer more than just comfortable places to live and work.



**TIME** - Time is the most valuable asset in a lavish way of life. With World-class, flexible-plan Offices and Residences which are Iconic in Design and Intelligent in Planning, Sarvottam Group marks class with each passing moment.



**MAGIC** - Sarvottam Group spreads the magic of your Ideal Luxury Home and an Opulent Lifestyle with its flawlessly designed interiors and outstanding workplace spaces to fit your ever-expanding goals.



**SPACE** - Every living thing needs space, and Sarvottam Group provides the best of both realms by combining luxury and convenience. Enjoy the luxury of expansive spaces with adequate space to support your satisfying and opulent way of life.



**SOUL** - Indulge in a luxurious lifestyle that feeds your spirit and helps you feel connected to your goals and passions.



**MIND** - A thoughtful use of space and infrastructure combined with a carefully planned life with Sarvottam Group will give you a stirring and inspiring sense of mind.



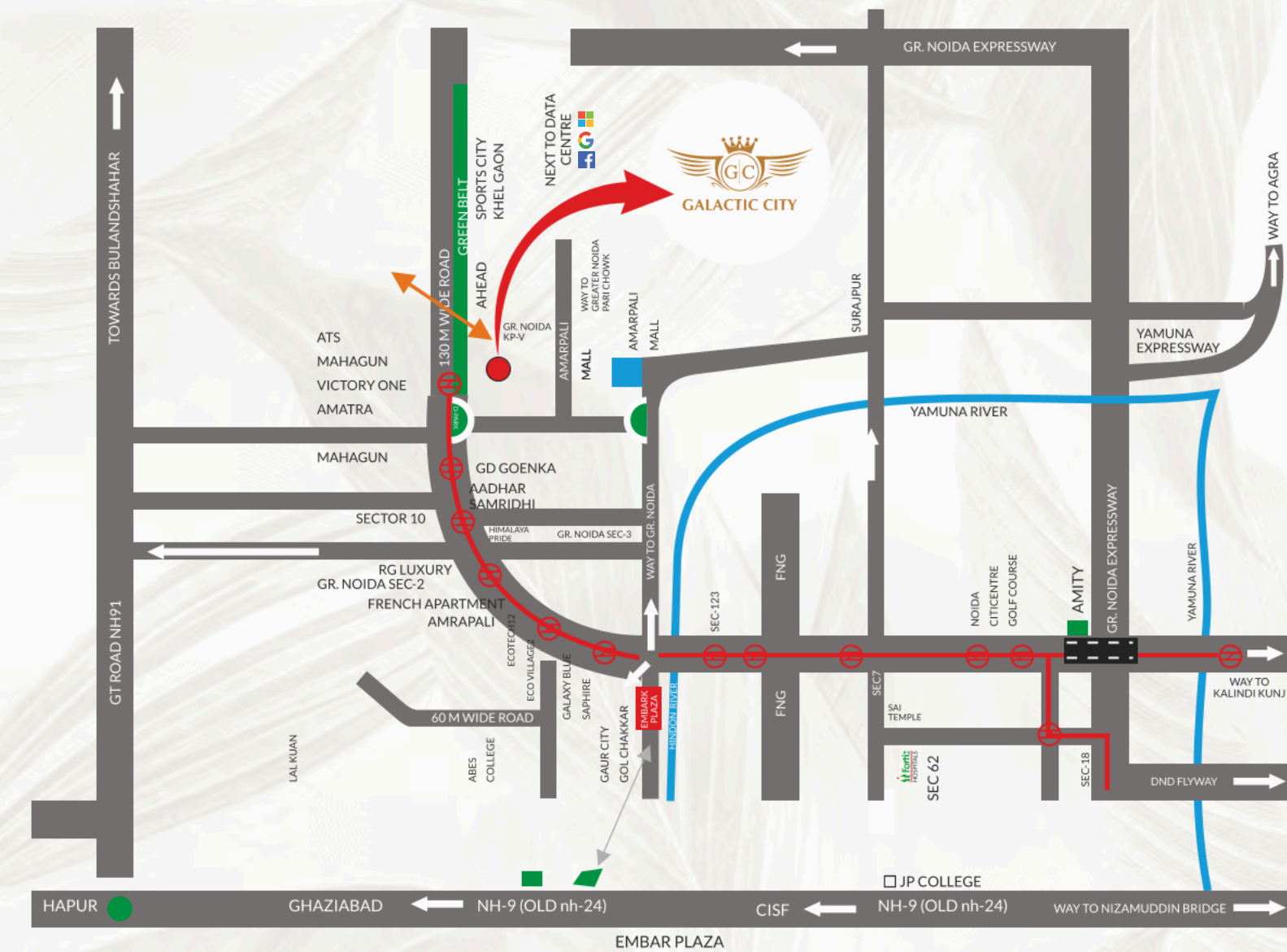
**POWER** - Sarvottam Groups is a power bundle of all the components to develop a complete solution for a motivating and potent routine. Enjoy the splendor of stunning inspiration that will alter the course of your business and personal visions.



Ultra Luxury  
Residential Apartments  
COMING SOON.....!!!



## LOCATION MAP



### KEY DISTANCES

NIILM-CMS 2 Mins	The Millennium School 1 Mins	Yotta Data Center Park Adjacent
Jewar Airport 15 Mins	Fortis Hospital 28 Mins	Amity University 32 Mins